

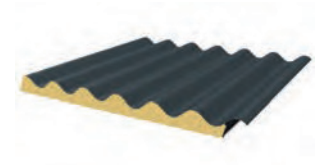
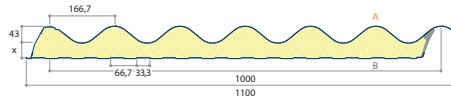
# Katalog Isolierpaneele



EHRHARDT BAUELEMENTE

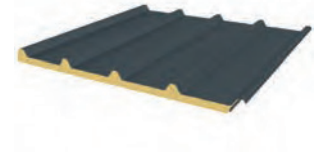
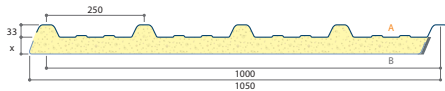
## Welle PIR

Nennstärke (mm)	Gewicht (kg/m <sup>2</sup> )	U-wert (W/m <sup>2</sup> K)
40	12,51	0,42
60	13,30	0,30
80	14,10	0,24



## Dach PIR 4

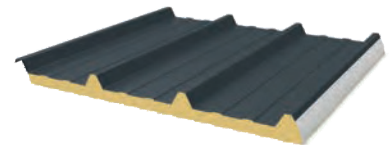
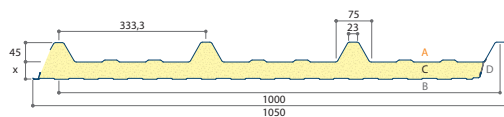
Nennstärke (mm)	Gewicht (kg/m <sup>2</sup> )	U-wert (W/m <sup>2</sup> K)
30	7,15	0,67
40	7,54	0,52
60	8,34	0,35
100	10,23	0,22



Unterseite: Film aus Aluminium

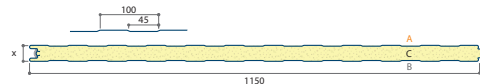
## Dach PIR

Nennstärke (mm)	Gewicht (kg/m <sup>2</sup> )	U-wert (W/m <sup>2</sup> K)
30	11,01	0,67
40	11,71	0,51
60	12,51	0,35
80	13,30	0,27
100	14,10	0,22
120	14,68	0,18
150	16,09	0,15

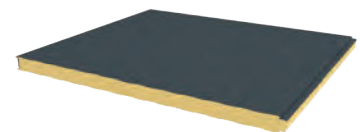


## Wand SB PIR (leicht liniert)

Nennstärke (mm)	Gewicht (kg/m <sup>2</sup> )	U-wert (W/m <sup>2</sup> K)
40	10,78	0,58
60	11,70	0,38
80	12,14	0,28
100	12,93	0,23
120	13,74	0,19
150	14,94	0,15
170	15,74	0,13
200	16,94	0,11
220	17,74	0,10

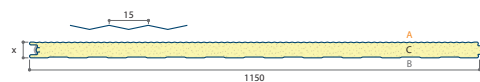


## Lagerware

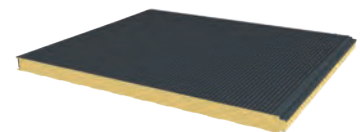


## Wand SB PIR (Micro liniert)

Nennstärke (mm)	Gewicht (kg/m <sup>2</sup> )	U-wert (W/m <sup>2</sup> K)
40	10,78	0,58
60	11,70	0,38
80	12,14	0,28
100	12,93	0,23
120	13,74	0,19
150	14,94	0,15
170	15,74	0,13
200	16,94	0,11
220	17,74	0,10

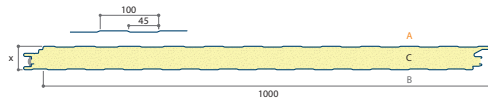


## Lagerware

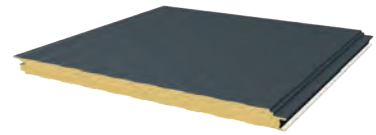


## Wand 1000VB PIR (leicht liniert)

Nennstärke (mm)	Gewicht (kg/m <sup>2</sup> )	U-Wert (W/m <sup>2</sup> K)
60	11,79	0,39
80	12,59	0,29
100	13,99	0,23
120	14,19	0,19
150	15,00	0,15

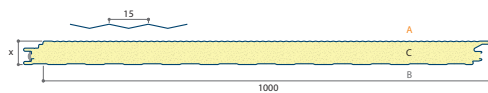


## Lagerware

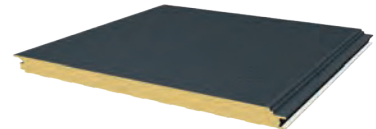


## Wand 1000VB PIR (micro liniert)

Nennstärke (mm)	Gewicht (kg/m <sup>2</sup> )	U-Wert (W/m <sup>2</sup> K)
60	11,79	0,39
80	12,59	0,29
100	13,99	0,23
120	14,19	0,19
150	15,00	0,15

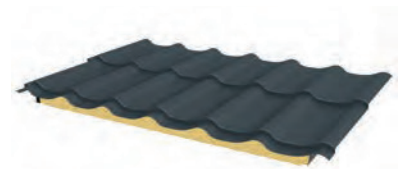
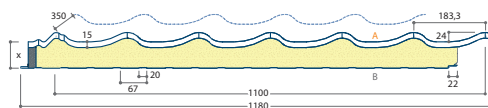


## Lagerware



## Dachpfanne

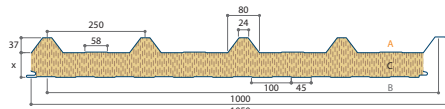
Nennstärke (mm)	Gewicht (kg/m <sup>2</sup> )	U-Wert (W/m <sup>2</sup> K)
40	11,92	0,48
60	12,72	0,34
80	13,52	0,26
100	14,37	0,21



## Miwo Dach

Mineralwolle

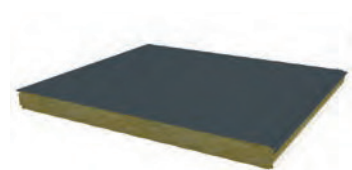
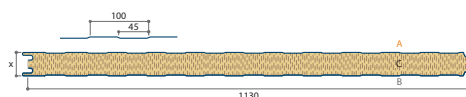
Nennstärke (mm)	Gewicht (kg/m <sup>2</sup> )	U-Wert (W/m <sup>2</sup> K)
50	15,50	0,76
60	16,00	0,65
80	18,00	0,50
100	20,00	0,41
120	22,00	0,34
150	25,00	0,28
175	27,50	0,24
200	30,00	0,21



## Miwo Wand (leicht liniert)

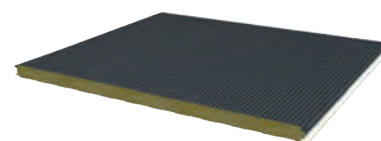
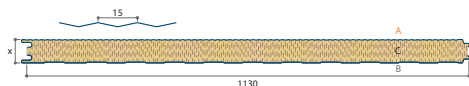
Mineralwolle 

Nennstärke (mm)	Gewicht (kg/m <sup>2</sup> )	U-Wert (W/m <sup>2</sup> K)
50	15,30	0,81
60	16,30	0,70
80	18,30	0,53
100	20,30	0,42
120	22,30	0,36
150	25,30	0,29
175	27,80	0,24
200	31,30	0,22



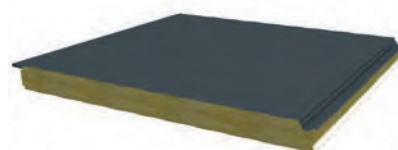
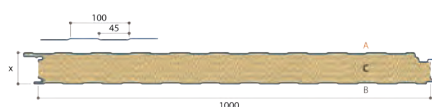
### Miwo Wand (Micro liniert)

Nenndicke (mm)	Gewicht (kg/m <sup>2</sup> )	U-wert (W/m <sup>2</sup> K)
50	15,30	0,81
60	16,30	0,70
80	18,30	0,53
100	20,30	0,42
120	22,30	0,36
150	25,30	0,29
175	27,80	0,24
200	31,30	0,22



### Miwo Wand 1000VB (Micro liniert)

Nenndicke (mm)	Gewicht (kg/m <sup>2</sup> )	U-wert (W/m <sup>2</sup> K)
50	15,30	0,85
60	16,30	0,70
80	18,30	0,53
100	20,30	0,43
120	22,30	0,36
150	25,30	0,28
175	27,80	0,24
200	31,30	0,22



### Miwo Wand 1000VB (Micro liniert)

Nenndicke (mm)	Gewicht (kg/m <sup>2</sup> )	U-wert (W/m <sup>2</sup> K)
50	15,30	0,85
60	16,30	0,70
80	18,30	0,53
100	20,30	0,43
120	22,30	0,36
150	25,30	0,28
175	27,80	0,24
200	31,30	0,22

